

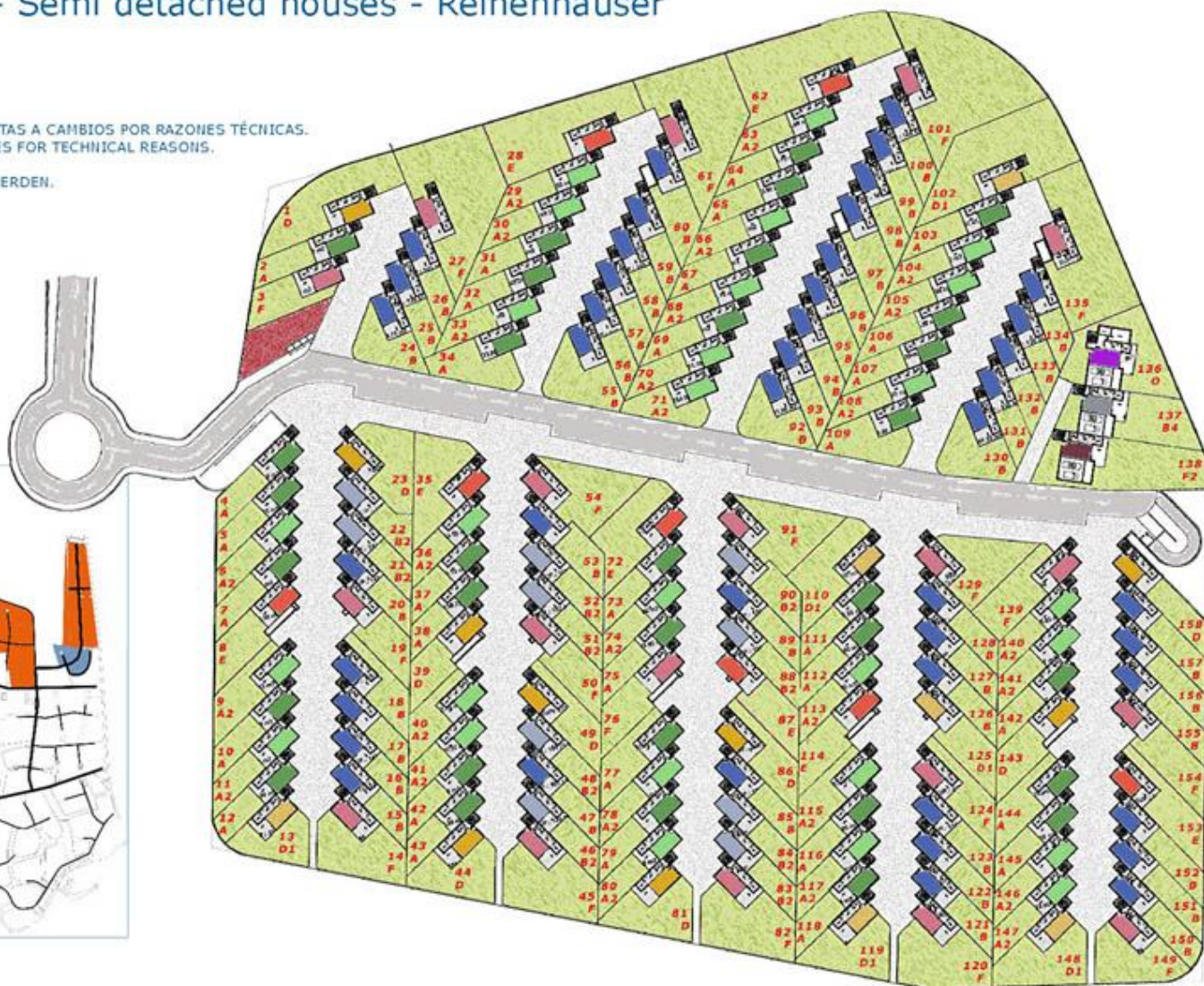
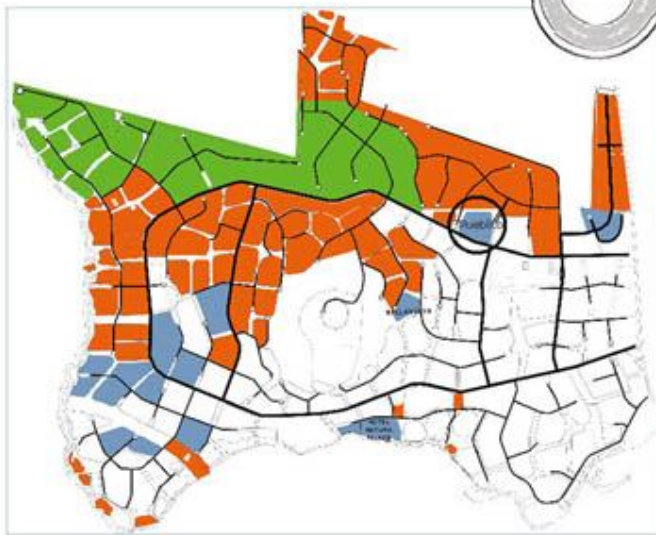
El Pueblito



El Pueblito

158 Casas semi adosadas - Semi detached houses - Reihenhäuser

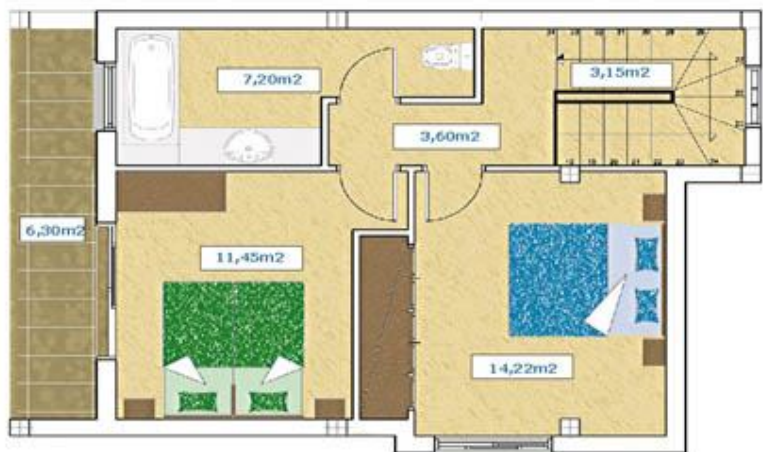
ESTAS CARACTERÍSTICAS SON ORIENTATIVAS, Y ESTÁN SUJETAS A CAMBIOS POR RAZONES TÉCNICAS.
 THESE FEATURES ARE INDICATIVE, AND SUBJECT TO CHANGES FOR TECHNICAL REASONS.
 DIESE EINGENSCHAFTEN DIENEN NUR ZUR ORIENTIERUNG,
 UN KÖNNEN AUFGRUND TECHNISCHER FRAGEN GEÄNDERT WERDEN.



El Pueblito



A



Superficie Construida
Constructed Surface 49,87 m²
Bebaute Fläche

Superficie Útil
Living Area 39,62 m²
Wohnfläche

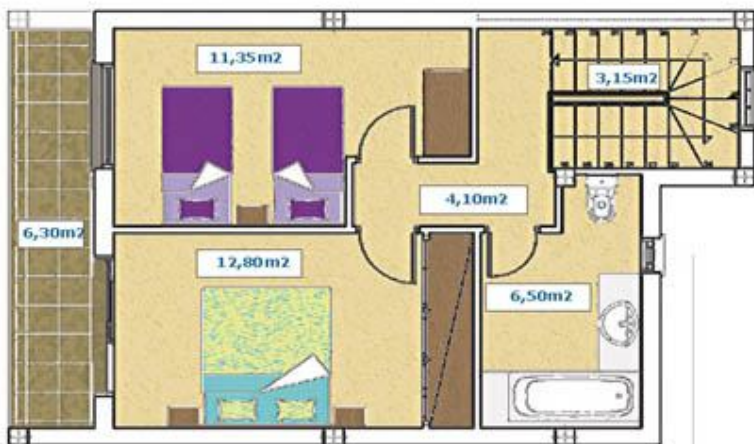
A2



Superficie Construida
Constructed Surface 49,29 m²
Bebaute Fläche

Superficie Útil
Living Area 37,92 m²
Wohnfläche

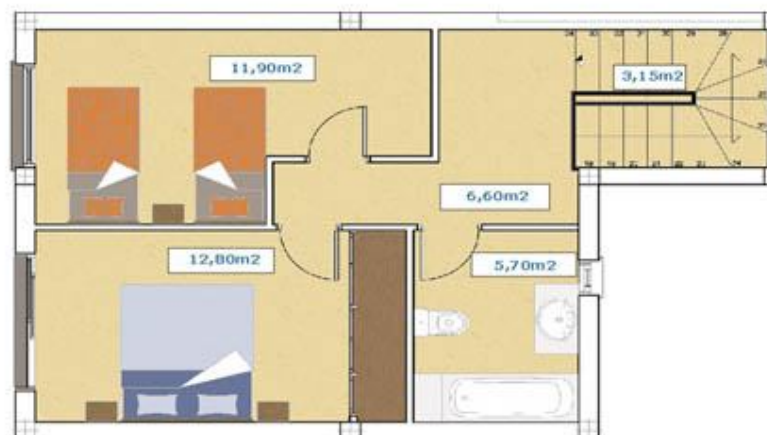
B



Superficie Construida
Constructed Surface 48,50 m²
Bebaute Fläche

Superficie Útil
Living Area 37,90 m²
Wohnfläche

B2



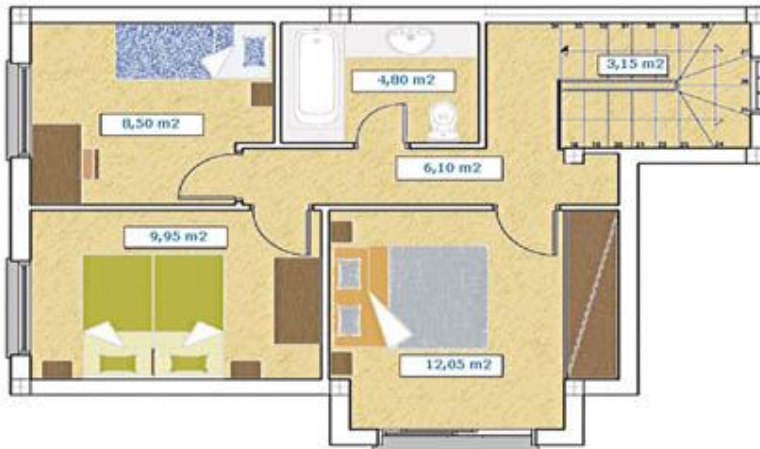
Superficie Construida
Constructed Surface 50,70 m²
Bebaute Fläche

Superficie Útil
Living Area 40,15 m²
Wohnfläche

El Pueblito

3  1  

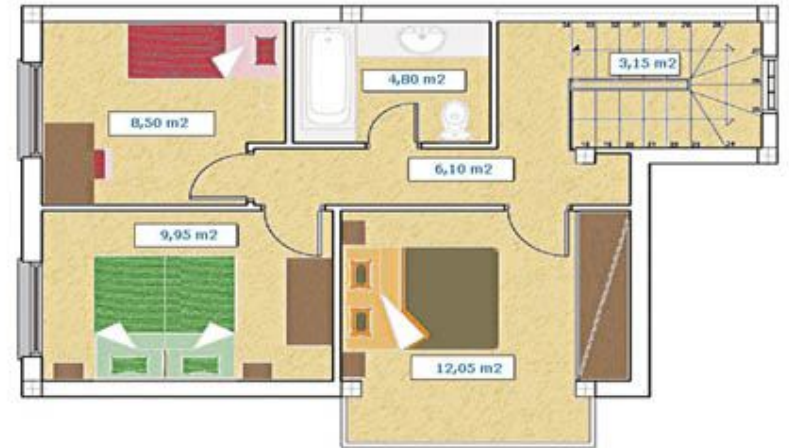
D



Superficie Construida
Constructed Surface 56 m2
Bebaute Fläche

Superficie Util
Living Area 44,55 m2
Wohnfläche

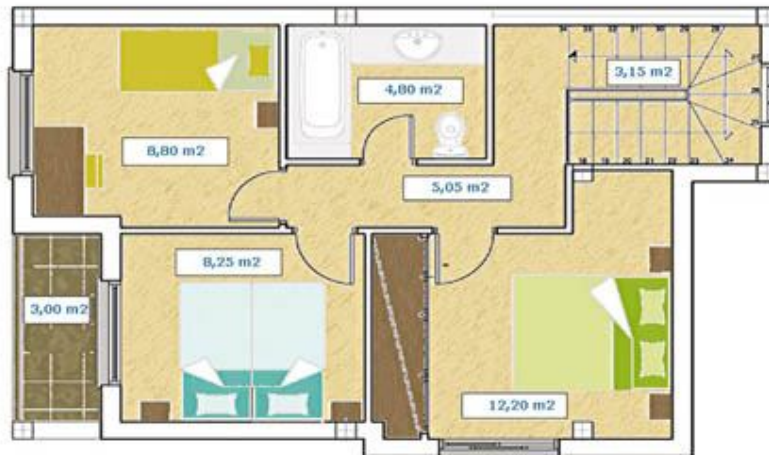
D1



Superficie Construida
Constructed Surface 56 m2
Bebaute Fläche

Superficie Util
Living Area 44,55 m2
Wohnfläche

E



Superficie Construida
Constructed Surface 53,50 m2
Bebaute Fläche

Superficie Util
Living Area 42,25 m2
Wohnfläche

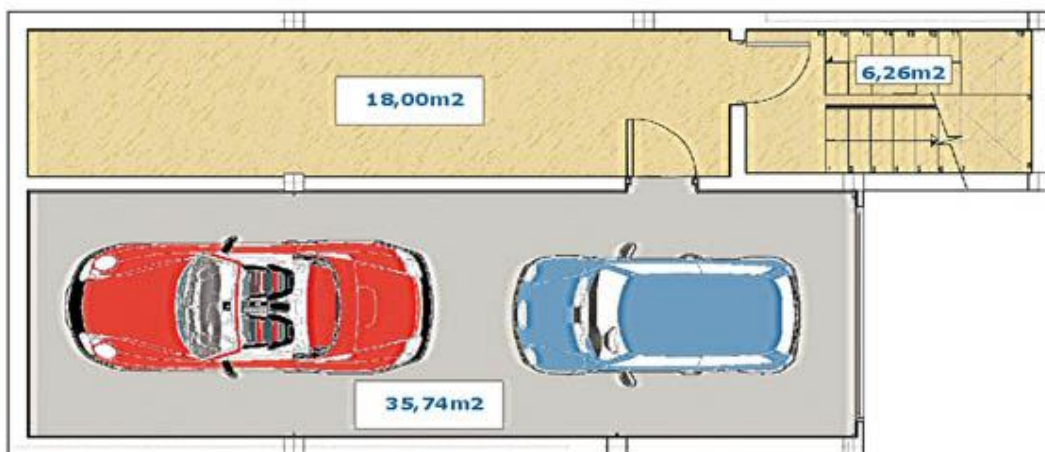
F



Superficie Construida
Constructed Surface 56 m2
Bebaute Fläche

Superficie Util
Living Area 45,10 m2
Wohnfläche

El Pueblito



Superficie Construida
Constructed Surface
Bebaute Fläche

70,78 m²

Superficie Utl
Living Area
Wohnfläche

59,57 m²



Superficie Construida
Constructed Surface
Bebaute Fläche

49,82 m²

Superficie Utl
Living Area
Wohnfläche

42,34 m²